



fw.d sign solutions



versatile size, colour & material specifications

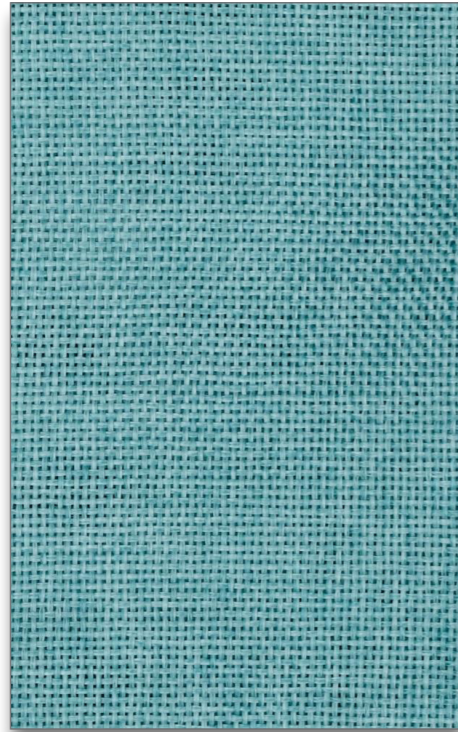
Any sign dimension and proportion up to 3 meters in length (2 depths to chose from)
Material finish, layering, cut outs, express your imagination.



versatile material specifications



Timber



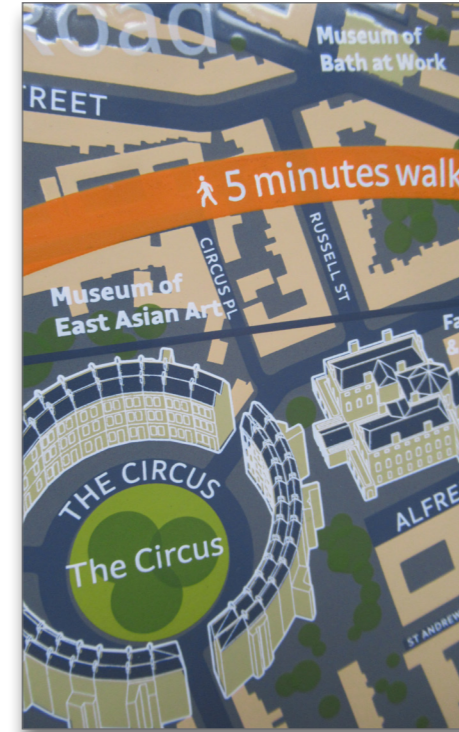
Fabric



Leather



Glass with rear applied graphics



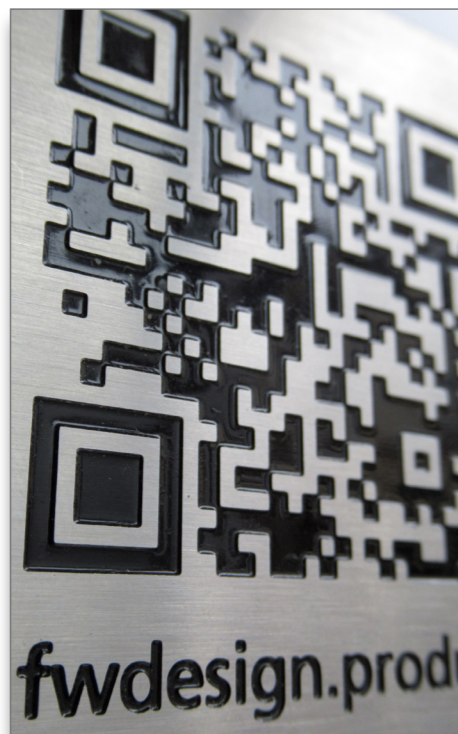
Vitreous enamel



Laser etched glass



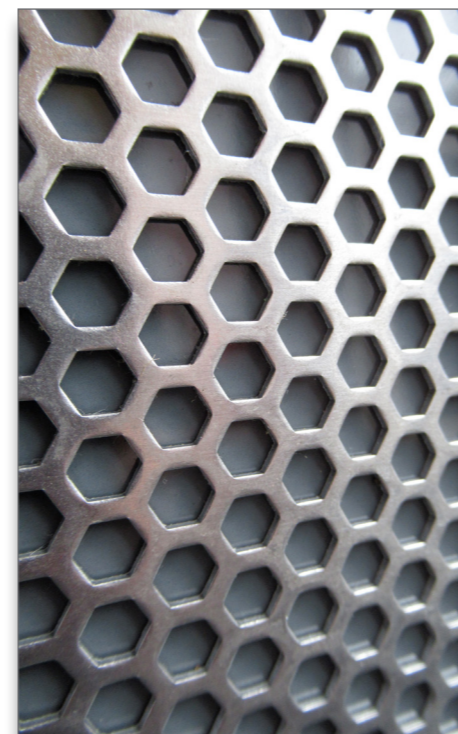
Screen printed graphics



Etched & paint in filled stainless steel



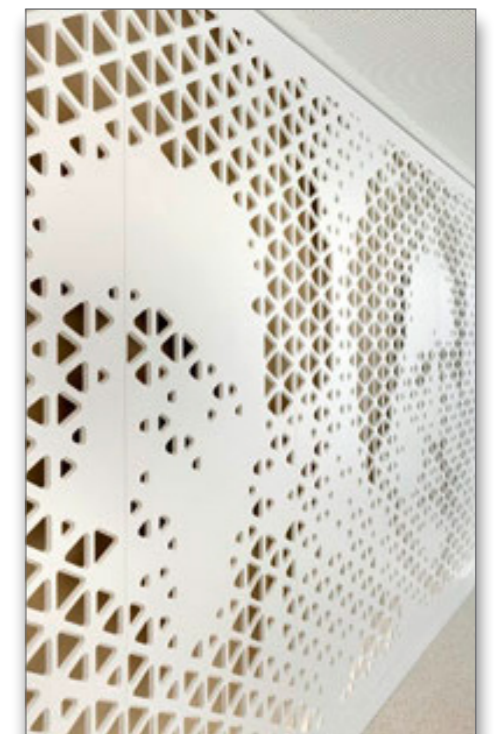
Stone



Perforated



Acrylic with cutout



Solid surface composite

eva - destination sign

Solid core yellow acrylic with cut outs exposing wall finish to rear of sign. Brushed stainless steel overlay with cut outs to expose solid core acrylic behind.



example family



eva - floor plan

Cherry veneer bonded to rigid backing panel.
 Graphic text silk screened to timber veneer. Braille
 pinned to surface. Level ID and floor plan panels
 in 3mm painted aluminium fixed proud of backing
 surface to create prominence.



Graphic Panel
 Timber veneer applied to solid backing panel. Graphics are silk screened to face with pinned braille.

Surface mounted panels
 Building floor plan and level ID are silk screened to aluminium panels, pinned and bolted through the rear surface allowing for replacement of graphic content if required.

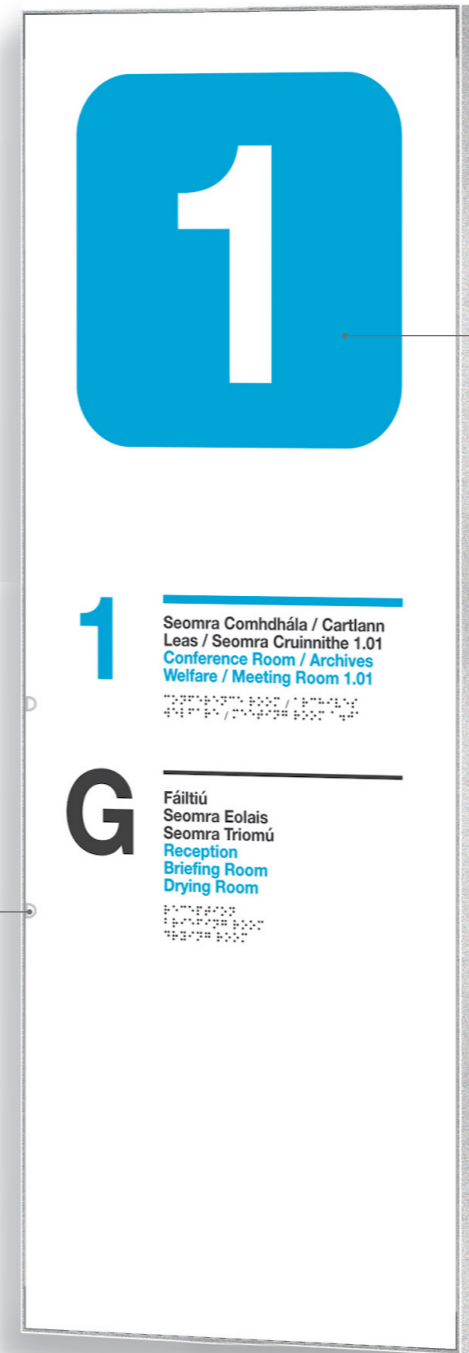
Extruded frame
 Extruded large aluminium frame with standard silver anodised finish or alternative paint finish to client colour specifications. Frame allows for easy update of graphics.

example family



eva - level id

Aluminium graphic panel in semi gloss polyester powder coat finish. Graphics face applied vinyl or silk screened to surface. Sign finished in a clear polyurethane lacquer to protect graphics. Braille pinned to face.



Graphic Panel

Aluminium panel with semi gloss polyester powder coat paint finish. Silk screened or vinyl graphics finished in a polyurethane lacquer to protect from damage.

Braille

Braille pinned to surface as required and matched with locator.

Extruded frame

Extruded small aluminium frame with standard silver anodised finish or alternative paint finish to client colour specifications. Frame allows for easy update of graphics.



example family



eva - endpoint

White acrylic panel with 6mm thick 304 grade stainless steel relief icons, pinned and bonded to sign face. Stainless steel icons have shot peened finish applied.



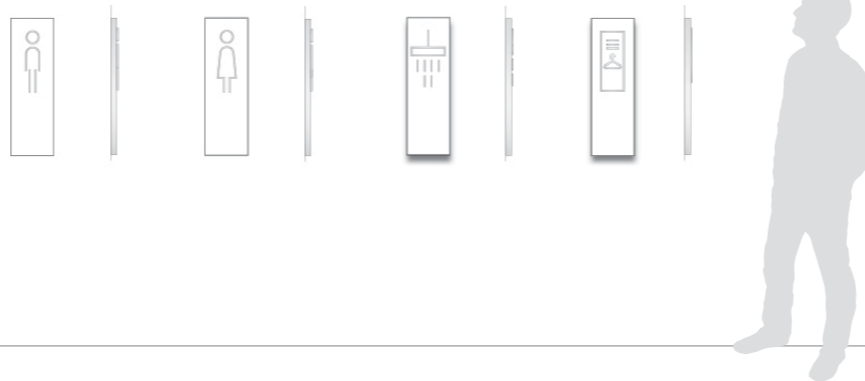
Graphic Panel

White acrylic face with 6mm thick shot peened stainless steel icons pinned and bonded to face of sign providing a tactile finish.

Extruded frame

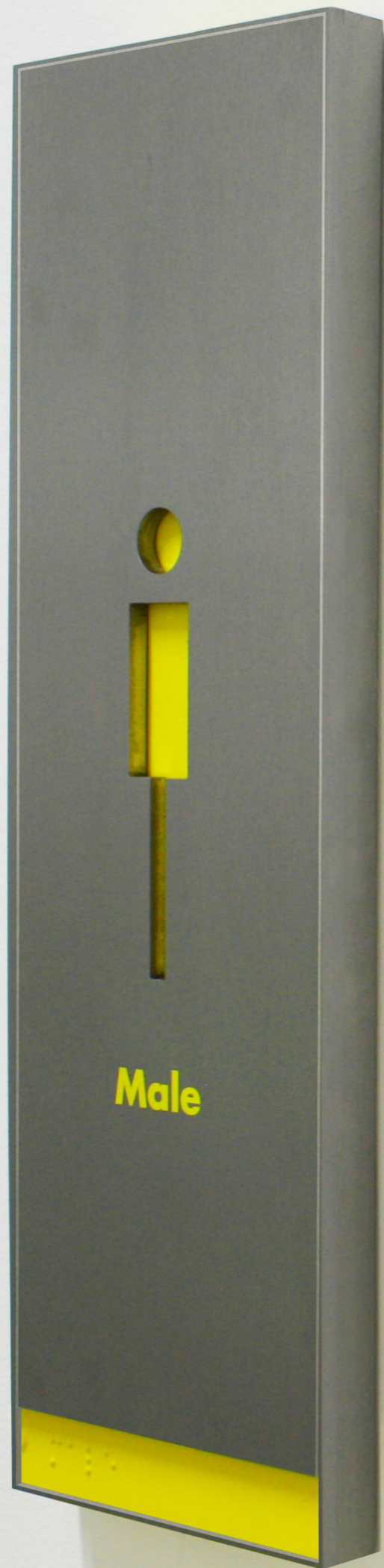
Extruded small aluminium frame with standard silver anodised finish or alternative paint finish to client colour specifications. Frame allows for easy update of graphics.

example family



HIVE[®]

01



G

GF

Chun Páirc Pháirce
Leibhéal G
To Car Park
Level G

www.fwd.ie



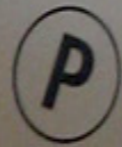


contact us

If you require any further information
or have an enquiry we'd love to hear
from you...

fwdesign limited
the design hub
41 Brookley Road
Brockenhurst
Hampshire
SO42 7RB

+44 (0)7717505701
enquire@fwdesign.com
www.fwdesign.com/product



Car Park



Lifts

Glass Walk

Restaurants

Toilets

Cash Point